

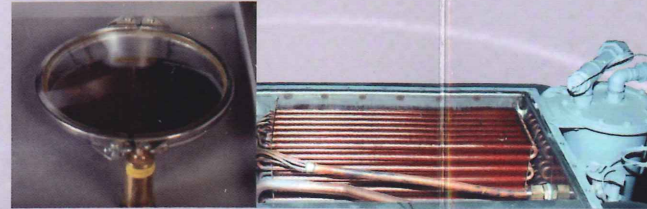
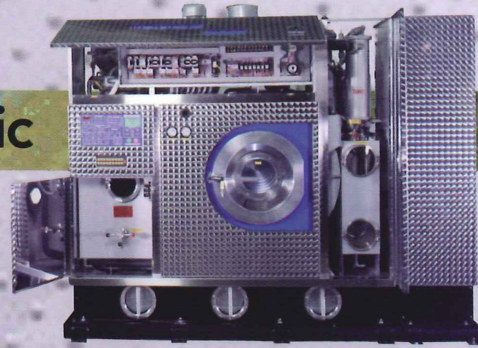
Multimatic

SL Series Drycleaning Machines



Multimatic

SL Series Drycleaning Machines Performance You Can Count On



Sight Glass - Copper Refrigeration Coils
 Located at top of machine, the sight glass allows visual inspection of the copper coils.

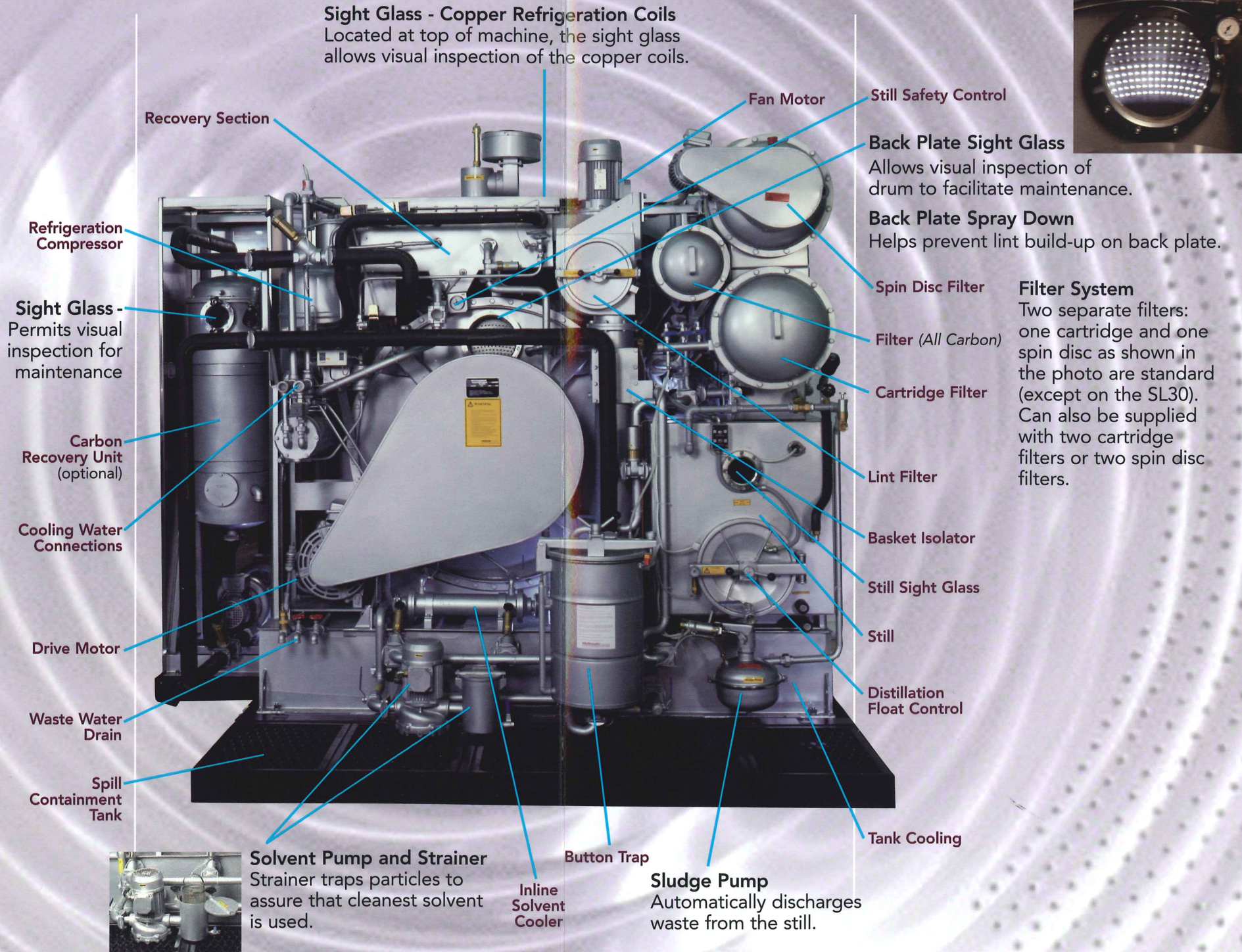


Multi-Comp Microprocessor

Simply select from one of the pre-set programs or one of the programs of your own and push the start button. The graphic flow control shows exactly what is happening during every phase of operation. Message center shows program in use and machine function in English or other languages.

Independent Manual Control

(Shown below the Microprocessor)
 Allows for machine operation independent of the micro-processor.



For the Cleaner Who Appreciates Quality

In Multimatic SL Series drycleaning machines, we have merged the outstanding features of the ever-popular Shop Star machines with the advanced features of the Legend Series. The result is equipment that is superior in every respect.

Illustrated and briefly described on these pages are some of the features that make SL Series such great machines. There are many others.

Multimatic SL Series machines are built with stainless steel throughout . . . including all the piping , tanks, basket and basket housing.. The large diameter basket provides superior mechanical cleaning action.

Many features for operator and environmental safety are built right into the machines. Button trap drying not only reduces solvent consumption, but also protects workers and the environment. Electronic door sensors on the button trap, lint trap, still door and loading door prevent machine operation if any of the doors are open. The patented basket isolator seals off the entire recovery channel, air channel, button trap and tanks from the basket to reduce solvent vapors in the basket in the shortest possible time.

You can count on Multimatic SL Series drycleaning machines for performance for today . . . and for many tomorrows.

SL Series

T E C H N I C A L D A T A

	SL30	SL40	SL50	SL65	SL75
BASKET					
Capacity, Lbs. (Maximum)	30	40	50	65	75
Volume, cu. ft.	9.1	12.5	15.6	19.8	22.5
Diameter, in.	37.5	37.5	40.5	44	44
Depth, in.	14	19.5	21	22.6	25.5
Cleaning Speed, rpm	40	40	34	34	28
Extraction Speed	398	398	345	335	167/345
TANKS					
Work Tank I (gallons)	39	45	57	59	59
Work Tank II (gallons)	29	35	40	46	46
Rinse Tank (gallons)	28	35	39.5	63	63
FILTER					
Cartridges	2*	2	3	3	3
Spin Disc	22*	27	33	44	44
STILL					
Max (gallons)	57	57	84	107	107
Operational (gallons)	39	39	55	75	75
Distillation Rate, Gph	56	56	60	85	85
MACHINE DIMENSIONS					
Width, in.	69	77.2	86.8	89	89
Width (with Carbon Recovery Unit), in.	91	99.2	108.8	111	111
Depth, in.	57	57	63	72	72
Height, in.	90	90	93.8	95.2	95.2
Partially dismantled for clearance					
Depth x Height, in.	51 x 81	50 x 81	54.5 x 83	62 x 84	62 x 84
Containment Tray					
Width x Depth x Height, in.	74 x 72 x 4	80 x 72 x 4	90 x 77 x 4	93 x 85 x 4	93 x 85 x 4
FLOOR LOAD					
Weight, lbs. (without solvent)	2093	2203	3748	4846	4950
Weight, with carbon recovery, lbs.	2343	2453	3998	5121	5225
POWER REQUIREMENT, STEAM HEATED					
Max Operating Load, amps	40	40	50	60	60
Motor					
Cleaning, HP	0.8	0.8	1.5	1.8	1.8
Extraction, HP	3	3	5	7	5.5/6.5
Solvent Pump, HP	0.75	1	1.5	1.5	1.5
Drying Fan, High Speed HP	1.2	2.6	2.6	3.4	3.4
Cool Down, Low Speed Fan HP	0.6	1.9	1.9	2.5	2.5
Refrigeration Compressor, HP	4.0	5.0	6.4	10.0	10.0
Filter Spin Motor, HP	0.75	0.75	0.75	1.1	1.1
SUPPLY CONNECTIONS					
Compressed Air					
Pressure, psi	85-95	85-95	85-95	85-95	85-95
Size of Fitting, in.	1/4	1/4	1/4	1/4	1/4
Steam					
Pressure, psi	45-60	45-60	45-60	45-60	45-60
Size of Fitting, in.					
Steam Inlet	(2) 1/2	(2) 1/2	(2) 1/2	(2) 1/2	(2) 1/2
Condensate Return	(2) 1/2	(2) 1/2	(2) 1/2	(2) 1/2	(2) 1/2
Water					
Pressure, psi	40-85	45-85	45-85	45-85	45-85
Size of Fitting, in.					
Water Inlet	1	1	1	1	1
Water Outlet	1	1	1	1	1
ELECTRICAL REQUIREMENT	208-220/60/3	208-220/60/3	208-220/60/3	208-220/60/3	208-220/60/3

Adding carbon recovery system requires additional steam and water connections as shown below:

Carbon Recovery System

Steam Inlet, in.	3/4	3/4	3/4	3/4	3/4
Steam Return, in.	3/4	3/4	3/4	3/4	3/4
Steam, psi	60-70	60-70	60-70	60-70	60-70
Amounts of Carbon, Lbs.	65	65	65	85	85

All Specifications Subject to Change Without Notice

* Available with either spin disc or cartridge filtration



Multimatic CORPORATION

162 Veterans Drive, Northvale, NJ 07647/USA • Telephone: 201-767-9660 • Fax: 201-767-7037