



On-Premises Hardmount Washer-Extractors

- 20 lb (9 kg) Washer-Extractor
- 30 lb (14 kg) Washer-Extractor
- 40 lb (18 kg) Washer-Extractor
- 60 lb (27 kg) Washer-Extractor
- 80 lb (36 kg) Washer-Extractor



Expert Solutions from the Laundry Experts



Heavy-Duty Gamma A-Frame

UniMac incorporates only the finest quality materials into each washer-extractor. The heavy-duty Gamma A-Frame is an excellent example of how durable components can save you time and money.

Constructed of structural grade steel, the same material used to build skyscrapers and bridges. UniMac's A-Frame is designed to stand up to the toughest laundry conditions. Its all-welded construction leaves no riveted connections that can loosen or break over time. In fact, this proven design is so strong that we back it with a five-year limited parts warranty.



T

ake a moment and step into the world of high tech product engineering, where UniMac washer-extractors are designed with innovative features that command top performance, and durable steel construction that will stand the test of time. At UniMac, washer-extractors are considered more than just laundry equipment. They are key players in the success of commercial laundry facilities and, as such, must continuously achieve high levels of efficiency, quality and durability. UniMac has always maintained a standard of excellence in washer-extractor manufacturing that is recognized around the world. With over 50 years of engineering expertise you can be assured that you are getting the best washer-extractors on the market that will meet your needs now and in the future.

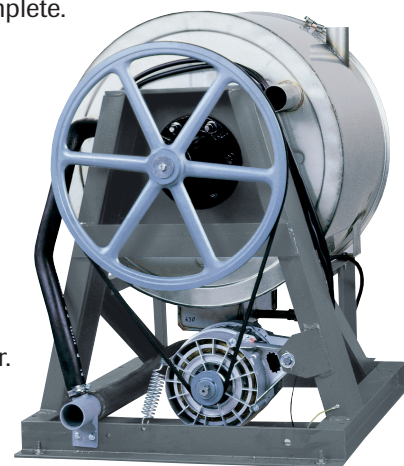
Eight-Cycle "B" Control

The eight-cycle control is easy to use. To operate the washer, simply choose a wash cycle and touch the Start key. For special applications, the eight program cycles can be easily modified to meet your laundry's unique demands. Maximum flexibility is offered with three water levels and up to five supply signals for automated dispensing of laundry chemicals. The cycle counter feature can be used to determine the number of loads started each day. The special test cycle provides a quick check for self-diagnostics. The digital display shows the number of minutes remaining until the cycle is complete.



Direct V-Belt Drive

Designed to provide high efficiency and long life dependability, UniMac's direct V-belt drive offers quiet, smooth washer operation. Fewer parts means less maintenance and less wear.



Heating Options

UniMac offers models that heat water via steam or electric heat. You can choose the heating option that best fits your on-premises laundry room.

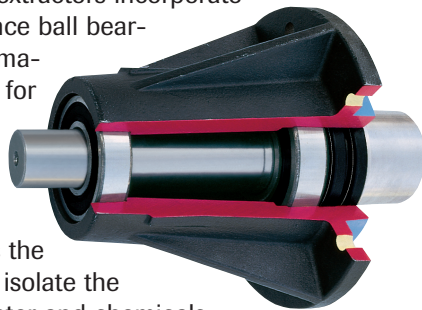
30-Cycle "A" Control

UniMac's state-of-the-art microprocessor control captures all of the features you need to make your laundry room operate efficiently. It offers you a total of 30 programs, any of which can be modified for automatic operation, giving you the flexibility to customize your on-premises laundry to meet specific needs. Special features include cycle time remaining, cycle counter, test-cycle for diagnostics, and cool down rinse.



Heavy-Duty Bearings and Seals

UniMac washer-extractors incorporate two close-tolerance ball bearings that are permanently lubricated for trouble-free operation. In addition, two triple lip seals provide six-times the sealing power to isolate the bearings from water and chemicals.



Stainless Steel Construction

With UniMac, the beauty lasts and lasts. Our durable 304 stainless steel cabinet front, top as well as inner and outer tubs won't corrode, chip, crack or pit in normal use, and they're extremely rust resistant.



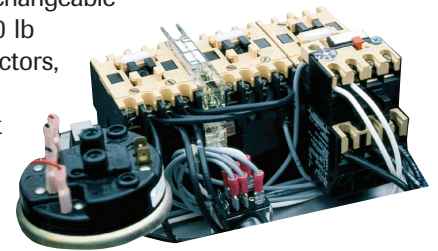
Five-Year Limited Parts Warranty

A five-year limited parts warranty is issued on the frame, basket, shaft, bearings and seals if failure or breakage should occur during normal operation due to defects in material or workmanship that would prohibit its further use. A three-year warranty is also issued to the original purchaser on most other parts. Labor not included.



Interchangeable Electronic Controls

UniMac engineered its control modules to allow for quick trouble-shooting and ease of service. The controls are interchangeable between UniMac 20-60 lb capacity washer-extractors, and can be accessed from the top and front of units. All electronic controls are protected from dirt and moisture by an additional safety cover.



Automatic Supply Dispenser

Our self-cleaning, multi-compartment dispenser automatically dispenses detergent for prewash, detergent for main wash and fabric softener for final rinse. UniMac clearly marks the three compartments with easy-to-follow instructions for ease of use. For your convenience, UniMac also includes provisions for liquid supply. Electrical connections are located on the rear of the machine for easy onsite hookup to a liquid supply system.



Large Loading Door

UniMac's large door opening makes loading and unloading fast and easy. Our heavy-duty stainless steel door features vacuum-tight sealing to keep water inside the machine where it belongs. Constructed with heat-treated, shatter-proof door glass and a door lock, operators can safely observe the wash process while giving them peace of mind.



Automatic Gravity Drain

A motorized gravity drain provides fast water drainage to shorten cycle time. More cycles in less time means higher productivity.

Specifications

	UC20	UC30	UC40	UC60	UC80
Capacity - lb (kg)	20 (9)	30 (13.6)	40 (18)	60 (27)	80 (36)
Overall Width - in (mm)	26" (660)	29" (737)	30 5/8" (778)	34 1/16" (865)	41 1/2" (1054)
Overall Depth - in (mm)*	29 13/16" (757)	34 13/16" (884)	40" (1016)	42 15/16" (1091)	52" (1321)
Overall Height - in (mm)	42 7/8" (1089)	45 7/8" (1165)	47 1/4" (1200)	50 13/16" (1291)	56 7/8" (1444)
Cylinder Diameter - in (mm)	21" (533)	24" (610)	28 1/4" (667)	30" (762)	36" (916)
Cylinder Depth - in (mm)	13 3/4" (349)	16" (406)	20 1/4" (514)	22" (559)	22" (559)
Cylinder Volume - cu. ft. (liters)	2.76 (78.1)	4.19 (118)	6.3 (180)	9.0 (255)	12.4 (354)
Door Opening Size - in (mm)	11 5/8" (305)	14 11/32" (364)	16 1/4" (413)	16 1/4" (413)	18 1/2" (470)
Door Bottom To Floor - in (mm)	14 3/8" (366)	14" (356)	14 1/2" (368)	15" (381)	17 3/4" (451)
Wash Speed - RPM	53	47	47	44	22/40
Distribution Speed - RPM	N/A	N/A	N/A	N/A	63
Extract Speed - RPM	525	480	470	469	280/408/524
Extract G-Force	82	78	82	93.8	40/85/142
Water Inlet Connection - in (mm)	3/4" (19)	3/4" (19)	3/4" (19)	3/4" (19)	3/4" (19)
Steam Inlet - in (mm)	1/2" (13)	1/2" (13)	1/2" (13)	1/2" (13)	1/2" (13)
Drain Diameter - in (mm)	2" (52)	2" (52)	3" (76)	3" (76)	3" (76)
Drain Height To Floor - in (mm)	4 1/2" (114)	4 1/2" (114)	4 3/4" (121)	5" (127)	5 3/4" (146)
Motor Size - hp (kW)	W .15 (.11)	.24 (.18)	.40 (.30)	.55 (.41)	N/A
	E .74 (.55)	1.34 (1)	1.8 (1.3)	2.7 (2.01)	5 (3.73)
Voltage/Hz/Phase • Circuit Breaker - Fla**	B 120/60/1 • 20-16	N/A	N/A	N/A	N/A
	C 380-415/50/3 • 15-4	380-415/50/3 • 15-4	380-415/50/3 • 15-5	380-415/50/3 • 15-4	N/A
	D 220-240/50/3 • 15-4	220-240/50/3 • 15-6	220-240/50/3 • 15-8	220-240/50/3 • 20-7	N/A
	E 220-240/50/1 • 20-10	220-240/50/1 • 20-10	N/A	N/A	N/A
	F 440-480/60/3 • 15-4	440-480/60/3 • 15-4	440-480/60/3 • 15-5	440-480/60/3 • 15-4	N/A
	J 200/50/3 • 20-7.5	200/50/3 • 20-7.5	200/50/3 • 20-7.5	200/50/3 • 20-8	N/A
	N N/A	N/A	N/A	N/A	440-480/50-60/3 • 15-4.5
	O** 200-240/60/3 • 15-5	200-240/60/3 • 15-6	200-240/60/3 • 20-7.5	200-240/60/3 • 20-10	N/A
	P N/A	N/A	N/A	N/A	380-415/50-60/3 • 15-4
	Q** N/A	N/A	N/A	N/A	200-240/50-60/3 • 15-4
	X N/A	N/A	N/A	N/A	200-240/50-60/1-3 • 15-9
	Y 208-240/60/1 • 15-10	208-240/60/1 • 20-10	208-240/60/1 • 30-14	N/A	N/A
Shipping Dimensions Approx. - in (mm)	H 51" (1295)	53 1/2" (1359)	56 1/2" (1422)	58 1/2" (1486)	62 1/2" (1588)
	W 29" (737)	30 1/2" (774)	32" (813)	36" (914)	48" (1219)
	D 32 1/2" (826)	37 1/2" (953)	41" (1041)	44 1/2" (1130)	56" (1422)
Net Weight - lb (kg)	353 (160)	496 (225)	686 (311)	811 (368)	1346 (610)
Shipping Weight - lb (kg)	373 (169)	519 (235)	710 (322)	838 (380)	1420 (644)
Export Shipping Weight - lb (kg)	461 (209)	600 (272)	810 (367)	947 (430)	1545 (701)
Agency Approvals***	CE, ETL, ETLc	CE, ETL, ETLc	CE, ETL, ETLc	CE, ETL, ETLc	CE, ETL, ETLc

* Overall depth includes drain pipe and door handle.

** Standard domestic voltage 208-240/60/3. Circuit breaker and amp draw data shown is for standard voltage models without auxiliary heat. Consult factory for other configurations. Manufacturer strongly recommends using a circuit breaker instead of fuses. Use 3-pole circuit breakers for 3-phase machines.

*** Agency approvals may vary depending on configuration. Consult factory for details. Steam connection requires 1/2" N.P.T.

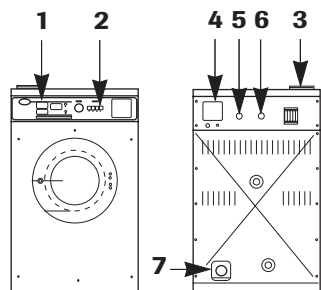
For the most accurate information, the installation guide should be used for all design and construction purposes. Due to continuous product improvements, design and specifications subject to change without notice. Features and certifications may vary by model. The quality management system of Alliance Laundry Systems' Ripon facility has been registered to ISO 9001:2000.

© Copyright 2008 Alliance Laundry Systems LLC

Printed in the U.S.A.



AU08-204



Front View Rear View

Components

1. Operating Instructions
2. Controls
3. Supply Dispenser
4. Electrical Power Connection
5. Cold Water Inlet 3/4" (19 mm)
6. Hot Water Inlet 3/4" (19 mm)
7. Drain Outlet



www.unimac.com

Alliance Laundry Systems
Shepard Street, Ripon, WI 54971 Telephone: 1-800-587-5458

